

- Power The World with Highest Efficiency

ENO-2090

Features

- **90W Output, Active PFC**
- **Protections:** OVP, OPP, SCP, OTP
- **Reliability:** MTBF 100,000 hrs @ 25°C, Full Load
- **High Efficiency:** 80% @ 115Vac, Full Load
- **Safety Approval:** Pending
- **Warranty:** 1-year manufacturer



Input Specification					
Parameter	Conditions/Description	Min.	Normal	Max.	Units
Input Voltage Range	Universal Input	90	100-240	264	V(ac)
Input Frequency Range		47	60/50	63	Hz
Input Current	Measured at 90 Vac / 264 Vac input, full load output			2.0	A
Inrush Current	Measured at 50A@115Vrms / 100A@ 230Vac (25°C ambient temperature, cold start).				A
Efficiency	Measured at 115 Vac or 230Vac, Full Load		80		%

Output Specification										
Parameter	Conditions/Description	Voltage Regulation		Ripple Noise	Output Current (Amps)			Units		
		Range	Min. (V)	Max. (V)	(mVp-p)	Min.	Normal		Max.	Peak
+3.3VDC		+/-5%	3.14	3.47	50	0	-	6	-	
+5VDC		+/-5%	4.75	5.25	50	1	-	8	-	
+5VSB		+/-5%	4.75	5.25	50	0	-	1.0	3.5	
+12VDC		+/-5%	11.4	12.6	120	0	-	6	19	
-12VDC		+/-10%	-10.8	-13.2	120	0	-	0.3	-	
Hold-Up Time	Measured at 115Vac/60Hz or 230Vac/50Hz/90% load after power source removed.					16				mSec
Output Rise Time								10		mSec
Total Combined Output of +3.3V and +5V can not exceed 45W.										

Environmental Specification					
Parameter	Conditions/Description	Min.	Normal	Max.	Units
MTBF	Calculated via MIL-HDBK-217F @ 25°C ambient temperature, Full load, 110 Vac	100,000			Hours
Operating Temperature	Full load	0		40	°C
Storage Temperature		-40		70	°C
Relative Humidity	Non-Condensing	20		85	%
Dimension	Length x Width x Height	165 x 65 x 40/6.5 x 2.56 x 1.57			mm / inch
ROHS	European Directive 2002/95/EC				

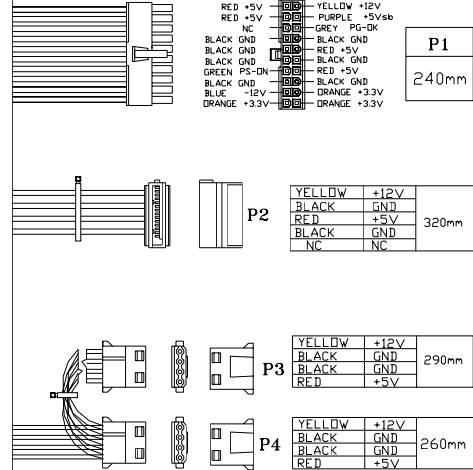
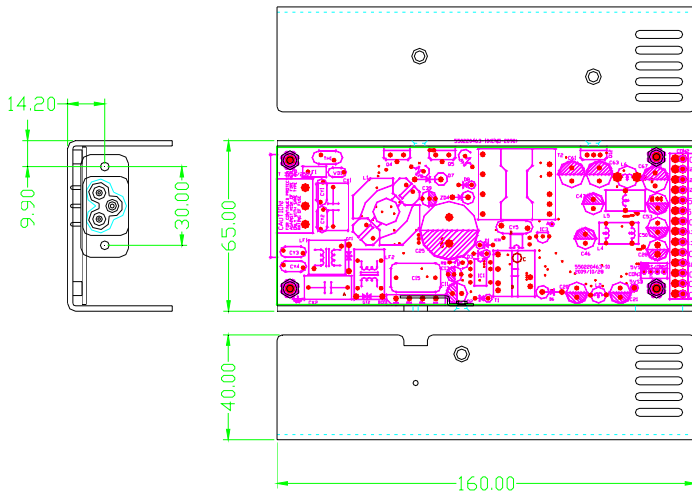
Reliability Protection		
Parameter	Conditions/Description	Recovery Mode
Overload	Transit to current limit mode if output over 110% - 180%	Shut Down Output, Auto recover once reset AC power-on by user
Over Voltage		Shut Down Output, Auto recover once reset AC power-on by user
Short Circuit		Shut Down Output, Auto Recover once faults conditions removed
Over Temperature		Shut Down Output, Auto Recover once faults conditions removed

Safety & EMC Compliance		
Category	Standard	Comment
SAFETY	cUL, Nemko	Meet
EMI Conduction & Radiation		Compliance
Harmonic Current Emissions		EN61000-3-2 Compliance
EMS Immunity	Voltage Fluctuation	EN61000-3-3 Compliance
	Electrostatic Discharge (ESD)	EN61000-4-2 Compliance
	Radiated Susceptibility	EN61000-4-3 Compliance
	Fast Transients / Burst - EFT	EN61000-4-4 Compliance
	Input Line Surge Immunity	EN61000-4-5 Compliance
	Conducted Susceptibility	EN61000-4-6 Compliance
	Power Frequency Magnetic Field	EN61000-4-8 Compliance
Voltage Dips	EN61000-4-11 Compliance	



Industrial Panel PC

- Power The World with Highest Efficiency



P1	Molex 39-01-2200 or equivalent
P3,P4	Molex 8981-04P or equivalent
P2	Molex 88751 or equivalent SATA

Notes

- Datasheets are updated as needed and as such, specifications are subject to change without notice. Once printed or downloaded, datasheet are no longer controlled by Enhance Electronics, refer to <http://www.enhanceusa.com> for the most current product specifications.
- Product labels shown, including safety agency certifications on labels, may vary based on the date manufactured.
- Mechanical drawings (model No. ENO-2090) is for reference only. The cable wire configuration may vary from other custom designed models as picture showing. Please contact your sales representative for detail.
- Specifications are for reference only. All specifications are measured at an ambient temperature of 25°C, humidity 65%, 230Vac nominal input voltage and at rated output load unless otherwise specified.