

# ENP-2725H

• 250W



## Features

- SFX12V & SFX Backward Compliant
- SATA HDD power connector built-in
- High Efficiency
- Remote On/Off
- Power good TTL Signal
- Short Circuit, Over Current & Voltage Protection
- Active Power Factor Correction (PFC)
- IAPC, Wake-On-LAN Technology Ready
- Auto-Sensing Thermal Control
- Low Acoustic Noise



## Apply For

- All Intel Processors up to P4-HT
- All AMD Processors up to Athlon



## Electrical Specifications

- Input Voltage 100 ~ 240 VAC Auto Select
- Frequency 47 ~ 63 Hz
- Input current 5.0 Arms @ 115 VAC  
2.5 Arms @ 230 VAC
- Holdup Time > 16 ms @ Full Load

## Environmental Specifications

- Operating/Storage Temp. 10~50°C/-20~60°C
- Operating/Storage Humidity 85% / 95%
- Operating/Storage Altitude 10,000/50,000 FT
- MTBF 100,000 HRS
- Safety Approvals UL/CUL, CB, TUV, Denko, Nemko
- EMC Regulations FCC, CE

## Output Specifications

Voltage	Regulation Load	Minimum Load	Maximum Load	Peak
+3.3V	+5%, -3%	0.5A	18.0A	--
+5.0V	+/- 5%	0.3A	20.0A	--
+12.0V	+/- 5%	1.0A	16.0A	18.0A
-12.0V	+/- 10%	0A	0.3A	--
+5 Vsb	+/- 5%	0A	2.0A	2.5A

(\* Total maximum combines load output on +3.3V and +5V rails is 105 Watts.

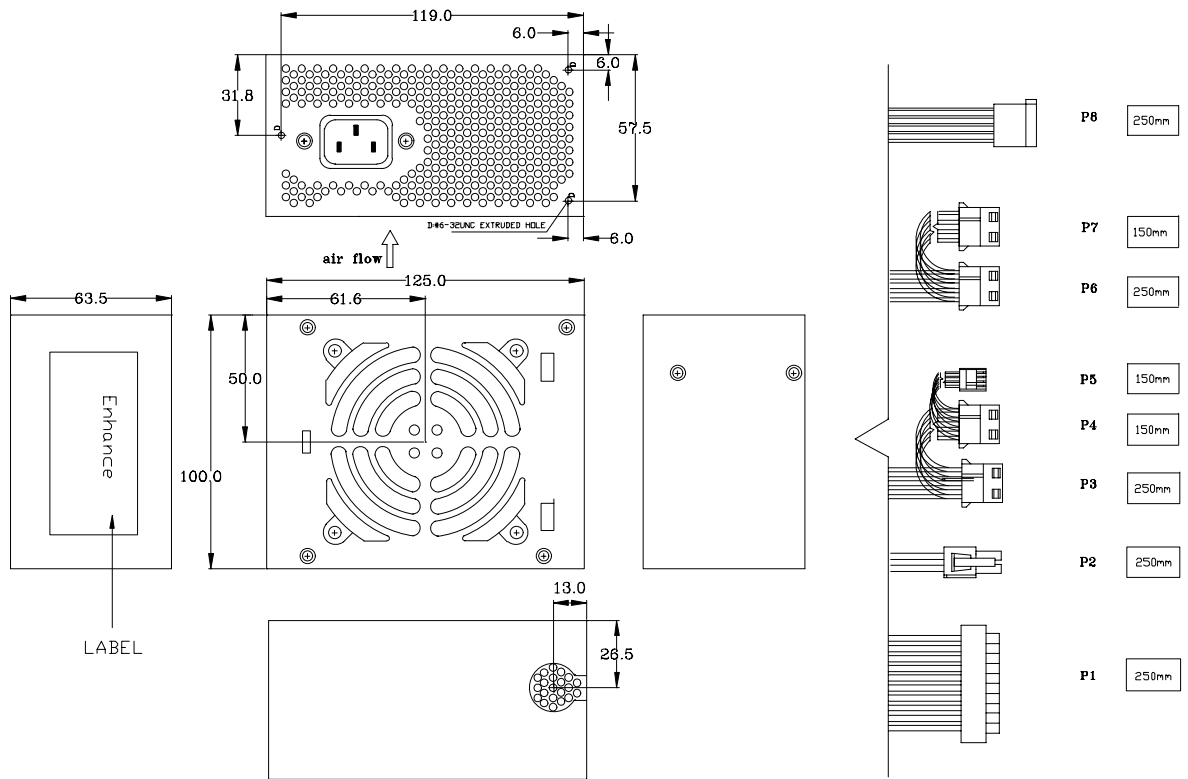
SFX12V

# ENP-2725H

• 250W

## Mechanical Drawing

SFX12V



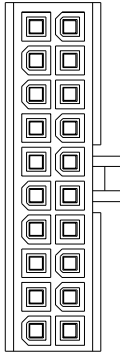
# ENP-2725H

## Wire Harness

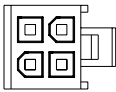
• **250W**

### Description

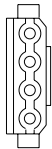
P1 - Main Power



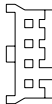
P2 - 4 Pin Processor Power



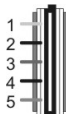
P3 to P4, P6 to P7 - Peripheral



P5 - Floppy



P8 - Serial ATA



### Connector Housing

Molex 39-01-2200 or Equivalent

1	Orange	+3.3V	11	Orange	+3.3V
2	Orange	+3.3V	12	Blue	-12VDC
3	Black	GND	13	Black	GND
4	Red	+5V	14	Green	PS_ON
5	Black	GND	15	Black	GND
6	Red	+5V	16	Black	GND
7	Black	GND	17	Black	GND
8	Gray	PWR OK	18	NC	Reserved
9	Purple	5 VSB	19	Red	+5V
10	Yellow	+12V	20	Red	+5V

Molex 39-01-2040 or Equivalent

1	Black	GND	3	Yellow	+12V
2	Black	GND	4	Yellow	+12V

Molex 8981-04P or Equivalent

1	Yellow	+12V
2	Black	GND
3	Black	GND
4	Red	+5V

AMP 171822-4 or Equivalent

1	Red	+5V
2	Black	GND
3	Black	GND
4	Yellow	+12V

Molex 88751 or Equivalent

1	Yellow	+12V
2	Black	GND
3	Red	+5V
4	Black	GND
5	Orange	+3.3V

### Dimension (WxLxH)

- 125 x 100 x 63.5 (mm)
- 4.92 x 3.93 x 2.5 (inch)

### Cooling Fan

- 12V DC, 80 x 80 x 20 mm

### Notes

- Specification subject to change without notice. All new processors support will be updated once official announced by vendors
- All company logo and legal name belong to original company. All copyright reserved by Enhance Electronics.
- One-Year Standard Warranty
- Last Update: 10/16/2003

SFX12V