

# ENS-0565

• 650W, PFC



## Features

- EPS12V Rev 2.8 compliant
- Dual Processor server & workstation platform ready
- Dual Graphic, Crossfire platform ready
- High Efficiency, Active PFC, Auto Voltage Sensing
- Remote On/Off, Power good TTL signal
- Short circuit, Over Current & Voltage Protection
- Extra power cable converter to support different M/B
- Power Factor Correction (PFC)
- IAPC, Wake-On LAN Technology Ready
- Auto-Sensing Thermal Control
- Low Acoustic Noise

## Apply For

- All Intel Processors up to DP Xeon P4
- All AMD Processors up to DP Opteron



## Electrical Specifications

- Input Voltage 115 ~ 240 VAC  
Auto Voltage Sensing
- Frequency 50 ~ 60 Hz
- Input current 10 Arms @ 115 VAC  
5.0 Arms @ 230 VAC
- Holdup Time > 14 ms @ Full Load

## Environmental Specifications

- Operating/Storage Temp. 10~50°C/-20~60°C
- Operating/Storage Humidity 85% / 95%
- Operating/Storage Altitude 10,000/50,000 FT
- MTBF 100,000 HRS
- Safety Approvals Pending
- EMC Regulations FCC, CE

## Output Specifications

Voltage	Regulation Load	Minimum Load	Maximum Load	Peak
+3.3V	+/- 5%	1.5A	33.0A	--
+5.0V	+/- 5%	5.0A	24.0A	--
+12.0V1	+/- 5%	1.5A	13.0A	18.0A
+12.0V2	+/- 5%	1.5A	18.0A	--
+12.0V3	+/- 5%	1.5A	16.0A	--
+12.0V4	+/- 5%	1.5A	8.0A	13.0A
-12.0V	+/- 10%	0A	0.5A	--
+5 Vsb	+/- 5%	0.1A	2.0A	--

(\*) Total maximum combines load output on +3.3V and +5V rails should not exceed 170 Watts.

(\*\*) The maximum total combined output current on 12V rail is 42A at Nominal and 45A at Peak Load.

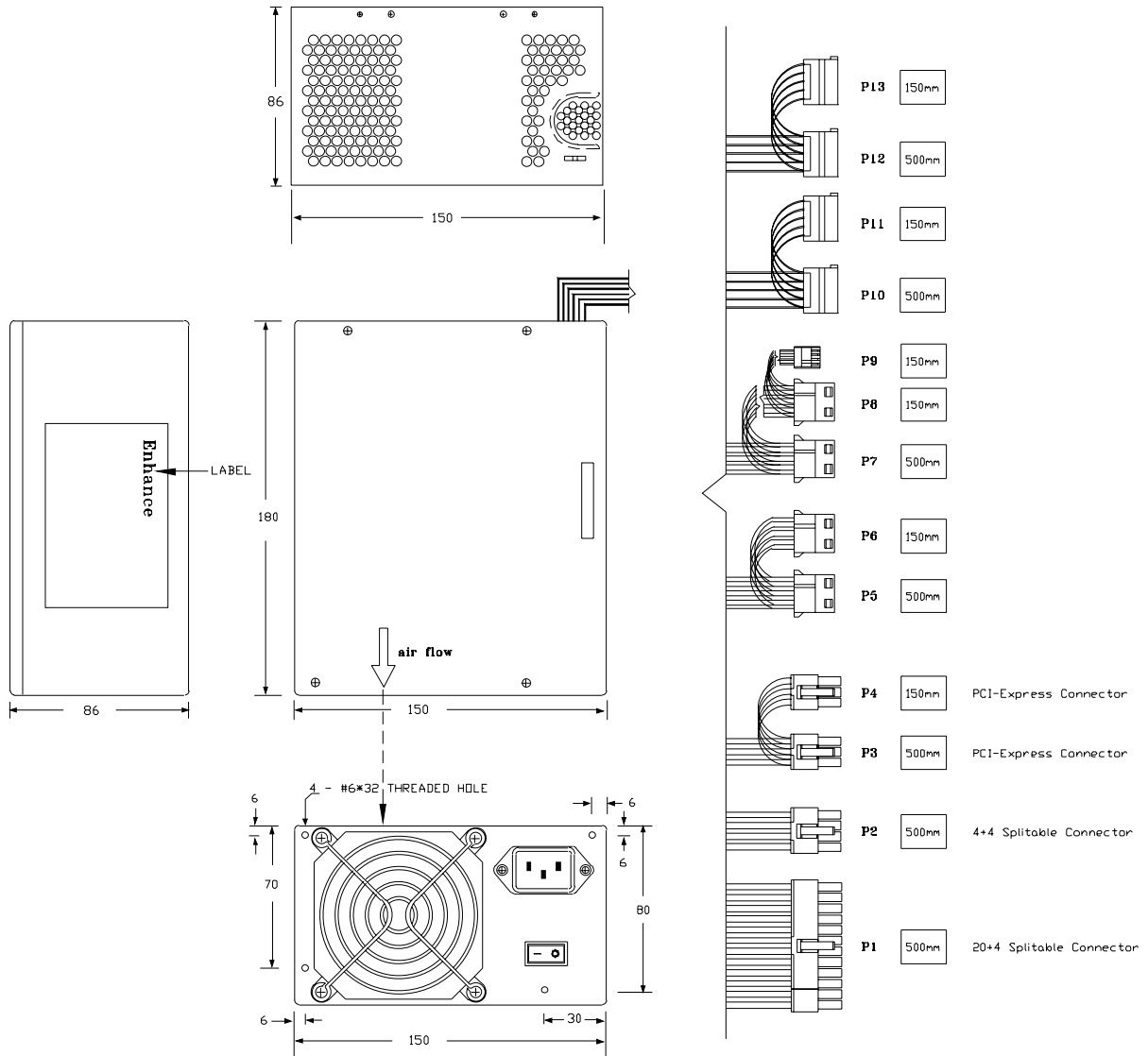
EPS12V

# ENS-0565

• 650W, PFC

## Mechanical Drawing

EPS12V

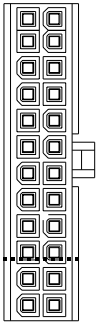


# ENS-0565

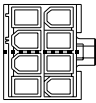
## Wire Harness

### Description

P1 - Main Power



P2 – 2x4, 8 Pin CPU-VR Power Connector



P3, 4 – PCI-Express Power Connector



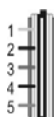
P5 to P8 – Peripheral



P9 – Floppy



P10 to P13 – Serial ATA



## • 650W, PFC

### Connector Housing

Molex 39-01-2240 or Equivalent (20+4 Split)

1	Orange	+3.3V	13	Orange	+3.3V
2	Orange	+3.3V	14	Blue	-12VDC
3	Black	GND	15	Black	GND
4	Red	+5V	16	Green	PS_ON
5	Black	GND	17	Black	GND
6	Red	+5V	18	Black	GND
7	Black	GND	19	Black	GND
8	Gray	PWR OK	20	NC	Reserved
9	Purple	5 VSB	21	Red	+5V
10	Yellow /Blue	+12V3	22	Red	+5V
11	Yellow /Blue	+12V3	23	Red	+5V
12	Orange	+3.3V	24	Black	GND

Molex 39-01-2080 or Equivalent (4+4 Split)

1	Black	GND	5	Yellow /Black	+12V1
2	Black	GND	6	Yellow /Black	+12V1
3	Black	GND	7	Yellow	+12V2
4	Black	GND	8	Yellow	+12V2

Molex 45559-0002 or Equivalent

1	Yellow /Blue	+12V3	4	Black	GND
2	Yellow /Blue	+12V3	5	Black	GND
3	Yellow /Blue	+12V3	6	Black	GND

Molex 8981-04P or Equivalent

1	Yellow /Green	+12V4
2	Black	GND
3	Black	GND
4	Red	+5V

AMP 171822-4 or Equivalent

1	Red	+5V
2	Black	GND
3	Black	GND
4	Yellow /Green	+12V4

Molex 88751 or Equivalent

1	Yellow /Green	+12V4
2	Black	GND
3	Red	+5V
4	Black	GND
5	Orange	+3.3V

# EPS12V

### Dimension (WxLxH)

- 150 x 180 x 86 (mm)
- 5.9 x 7.08 x 3.38 (inch)

### Cooling Fan

- 12V DC, 80mm

### Notes

- The main power connector comes with standard EPS12V pin assignment. Use C1 converter for Tyan S2462 (ATXGES) and C2 for S2603
- Specification subject to change without notice. All new processors support will be updated once official announced by vendors
- All company logo and legal name belong to original company. All copyright reserved by Enhance Electronics.
- One-Year Standard Warranty
- Last Update: 1/5/2006