

A028L40P070-1

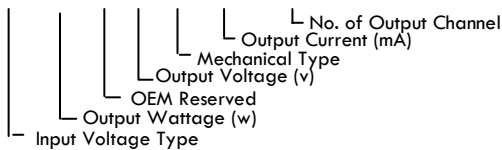
Features

- Wide range **90 ~ 264VAC (normal)** input voltages with **10 ~ 40V DC, 700mA (max.) Constant Current** output, suitable for remote locations.
- Dimming Control available By PWM and VR mode
- **High Efficiency**, low heat generated. Cooling by convection air.
- 100% full load QC burn-in test
- High reliability/ **low cost**
- One-year warranty



Order Information

X XXX X XX X XXX - X



Application – Street / Architecture LED Lighting



Specifications

MODEL No.	A028L40P070-1	
OUTPUT	DC VOLTAGE Rated / Range	40 / 10 ~ 40V
	RATED CURRENT	700mA @ normal
	CURRENT RANGE	0 ~ 700mA
	RATED POWER	28W
	RIPPLE & NOISE (max.) note.2	120mVp-p
	VOLTAGE TOLERANCE note.3	± 3.0%
	LINE REGULATION	± 1.0%
	LOAD REGULATION	±5.0%
	EFFICIENCY	85% @ 40VDC
SETUP, RISE TIME	1500ms, 30ms/115VAC	
INPUT	VOLTAGE RANGE	90 ~ 264VAC (Max.),
	FREQUENCY RANGE	47 ~ 63Hz
	POWER FACTOR	0.85 @ 115VAC, 0.8 @ 264VAC
	AC CURRENT	0.4A/100VAC
PROTECTION	OVER CURRENT	ABOVE 120% rated output power Protection Type: Hiccup mode, recovers automatically after fault condition is removed.
	OVER VOLTAGE	Protection Type: Shut off o/p voltage, clamping by zener diode
	OVER TEMPERATURE	95°C typically (U1) detect on main control IC Protection type: Shut down, recovers automatically after temperature drop below 63°C
ENVIRONMENT	WORKING TEMP.	-30 ~ 50°C
	STORAGE TEMP.	-40 ~ +85°C
SAFETY & EMC	SAFETY STANDARDS	Design refer to compliant requirement of UL1310 Class 2, TUV EN60950-1, EN61347-2-13, CAN/CSA, IP65 approval
	WITHSTAND VOLTAGE	I/P-O/P: 3750VAC
	ISOLATION RESISTANCE	I/P-O/P: >100M Ohms / 500VDC / 25°C / 70%RH
	EMI CONDUCTION & RADIATION	Compliance to EN55015, FCC, 47 CFR, Part 15, class B
	HARMONIC CURRENT	Compliance to EN61000-3-2, 3 Compliance to EN61000-4-2, 3, 4, 5, 6, 8, 11
OTHERS	EMS IMMUNITY	Compliance to EN61000-3-2, 3
	MTBF	100Khrs @ MIL-STD-217F(25°C) or 50Khrs @ MIL-STD-217F(60°C)
NOTE	DIMENSION (LxWxH)	105 x 37.5 x 25 (mm)
	<p>1. All parameters NOT specially mentioned are measured at 115VAC input, rated load and 25°C of ambient temperature.</p> <p>2. Ripple & noise are measured at 20 MHz of bandwidth by using a 12" twisted pair-wire terminated with a 0.1uf & 47uf parallel capacitor.</p> <p>3. Tolerance: includes set up tolerance, line regulation and load regulation.</p>	

LED Lighting Driver

Connector Block Diagram



Fig 2.1 – Top View



Fig 2.2 – Horizontal Side View

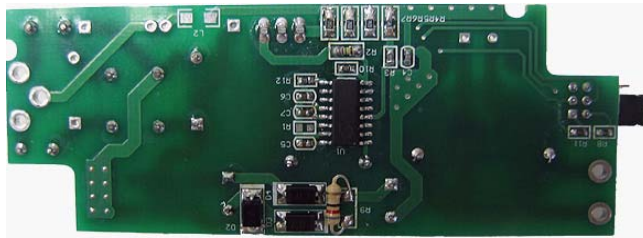
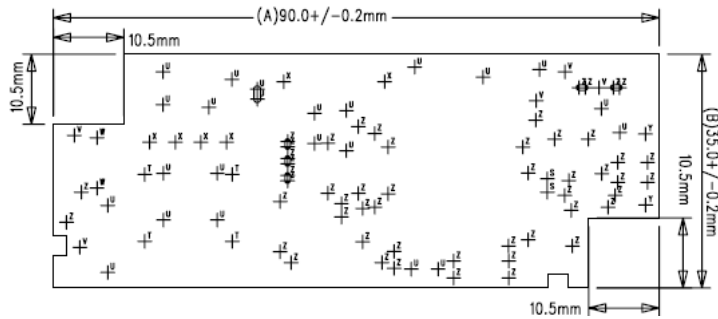


Fig 2.3 – Back Side View

Mechanical Drawing

Dimension(LxWxH): (90.0 x 35.0 x 18.0) +/- 0.2mm Unit: mm



Notes

- Specification subject to change without notice.
- All company logo and legal name belong to original company. All copyright reserved by Enhance Electronics.
- One-Year Standard Warranty
- Last Update: 10/9/2009